



MX-300

Unsurpassed Image Quality and Easy Operation

- Stable Output by The Inverter System
- Full AEC Mode (Auto kV)
- Auto Release Compression After Exposure
- High Performance Dual Focus System
- Highly Sensitive Fiber Grid Bucky Device
- 19 Step Density Control
- 2 Precise Collimation Formats

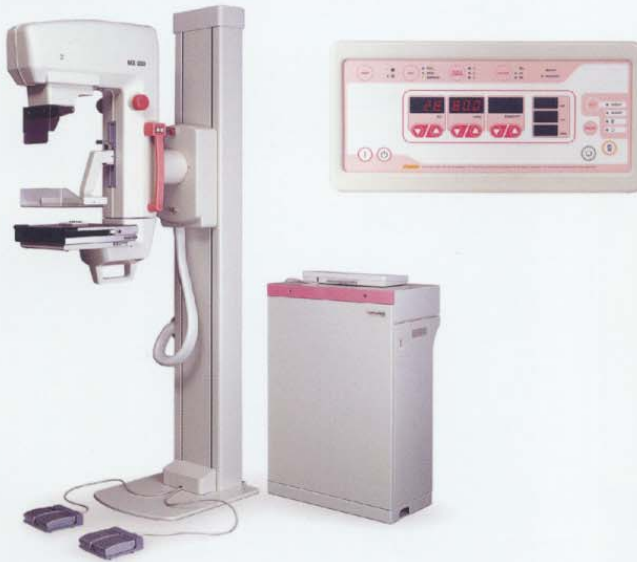


icanview

MX-300 Mammography system

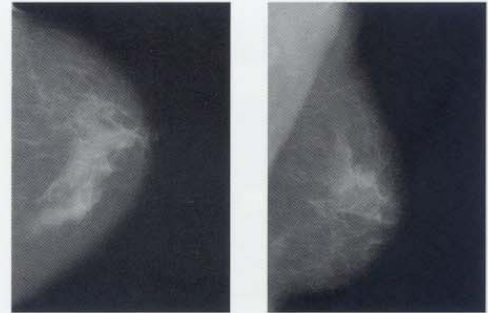
icanview Series
MX-300

Unsurpassed Image Quality and Easy Operation

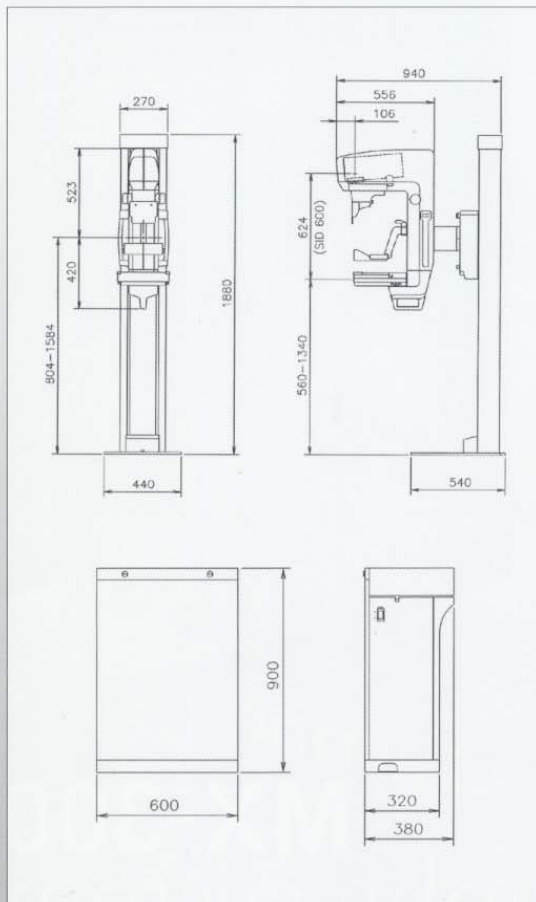


Intelligent Automatic Exposure Control (AEC)

With the Automatic Exposure Control system, it is possible to produce images with reliable intensity suitable for any film, screen, or method of radiography. Furthermore, it greatly enhances the convenience of radiography by embedding the Full-AEC function which is capable of utilizing the Auto kV.



Dimensions



Specifications

Generator

Type High Frequency Inverter
Radiographic Ratings Large Focal Point 22-35kV / 1-600mAs
Small Focal Point 22-35kV / 1-100mAs

X-ray Tube

Focal Spot Size Dual Focus 0.3 and 0.1 mm
Rotating Anode Molybdenum(Mo) / 300KHU
Port Material Beryllium(Be)
Filtration Mo

Radiographic Stand

C-ARM Vertical 560-1340mm
Rotation Right 180° / Left 160°
SID 600mm Fixed distance
Compression Manual and Motorized (Max 8kg)
Automatic or manual Release

Bucky Device

Cassette Size 18 X 24cm
GRID Reciprocating, 4 : 1 91 line/inch

Automatic Exposure Control

Type Solid-State Detector
Microprocessor Control
Mode Full / Semi / Manual
Density Adjustment 19 density steps

Optional

24 X 30cm Bucky Device
Magnification Device
Compression Force and Thickness Display Unit
Pb Acryl Plate

Line Voltage

200~220Vac, 50/60Hz, Single Phase