

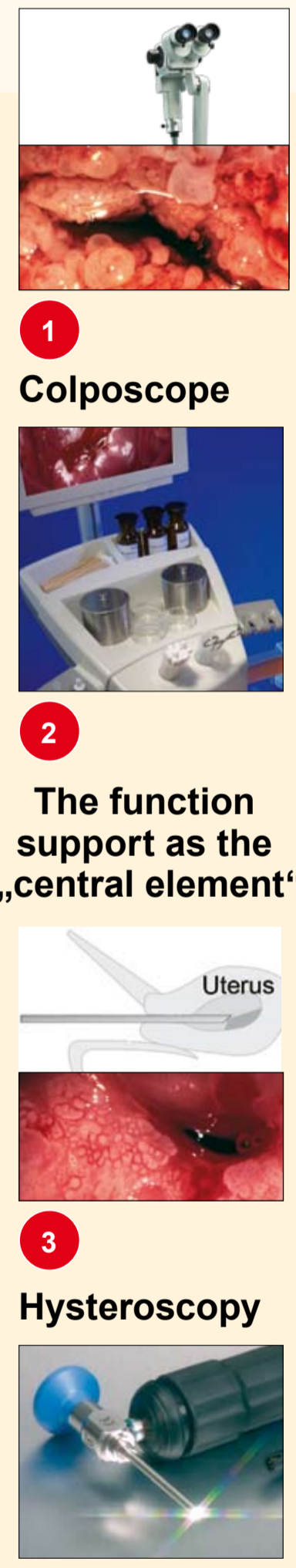
S 41 Gyne

The first complete gynaecological workstation

The world's first!



The first gynaecological workstation with modular integration of all medical engineering equipment



LED light source



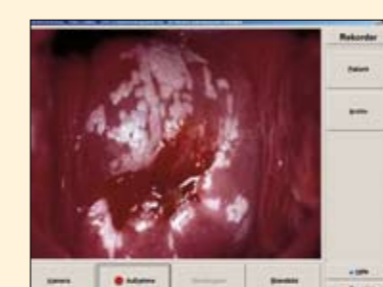
10 Extendable leg rest for examination chair



9 Suction device



8 Instrument deposit



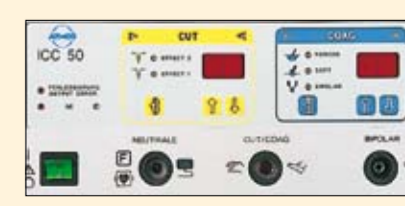
7 Image processing software



6 Smoke evacuation module



5a RS 221 module



5 High frequency surgery

10 Reasons for the S 41 Gyne!

1 Colposcope

2 The function support as the „central element“

3 Hysteroscopy