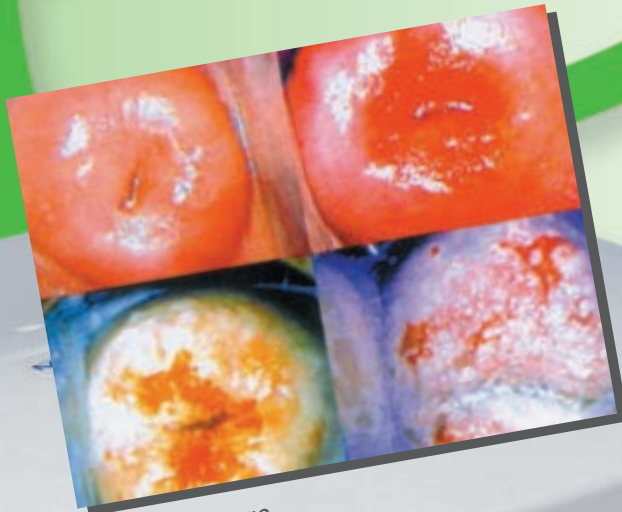


Video Colposcope



Original image





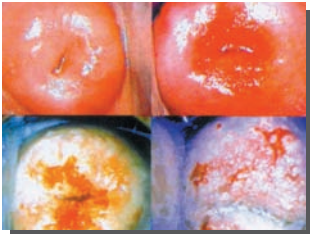
Full Frame

1. Simultaneous viewing capabilities for the better communication among doctors, patients and staffs.

2. Direct-to-screen colposcope gives you full screen, high resolution images with no couplers or beam splitters degrade image quality and field of view.

3. Digital imaging capturing technology enables you to capture images up to four images using only camera without any color video printer or computer system.

4. Built-in green filter removes red from image with no light loss, aids in the examination of important blood vessel patterns with color contrast.



Quad Display



Technical Specifications

Power	AC 110~220 V, 50~60 Hz
Video signal	NTSC / PAL
Output signal	Video S-Video
White balance	Auto gain control
Signal processing	Digital signal processor
Memory	4 frames
Display	4 full frame / Quad display
Lamp	12 V/100 W halogen lamp
Dimension of main unit	250(W) x 261 (L) x 90(H) mm
Weight	Main unit = 3.35 Kg Camera probe = 0.3 Kg